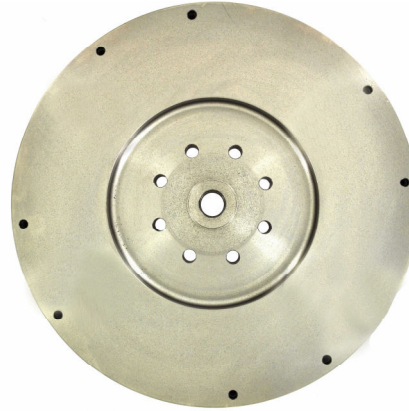




PRODUCT SPOTLIGHT
This bulletin contains valuable product related information.
NOVEDADES DEL PRODUCTO
Este boletín contiene información valiosa relacionada a este producto.
ACCENT PRODUIT
Ce bulletin contient de l'information utile sur les produits.



2005-2012 Dodge Turbo Cummins Diesel 5.9L/6.7L G56 Transmission 6-Speed Solid Flywheel



This AMS Automotive solid flywheel conversion (part number **167437**) is engineered to replace the OE dual-mass flywheel, while providing the following advantage:

- The AMS solid flywheel conversion has been developed for the customers that have already had a competitor's flywheel installed that has eliminated the adaptor plate. This flywheel will allow the customer the ability of not having to source the needed adaptor plate and mounting bolts which is costly and time consuming.
- This solid flywheel can be used with clutch kits **05-224** and **05-224SR200**.
- The flywheel will be supplied with a bronze bushing. This bushing helps to eliminate pilot bearing failure.
- This part is supplied with all necessary mounting hardware.
- The pressure plate and disc used with this flywheel have an outside mounting diameter that has been increased from 12-5/8" to 13", The larger clutch will provide additional torque capacity. This change parallels the previous AMS design of Ford 7.3L diesel conversion kits that was eventually incorporated into OE service.
- The increase in outside diameter is accompanied by a corresponding increase in mass. The AMS pressure plate has 12% more heat sink capacity than the OE system and 20% more heat sink capacity than competitive conversion systems.



Please note that the OEM hydraulic system does not provide adequate slave cylinder travel. Combined with the fact that the OEM system is difficult to bleed, it should ALWAYS be replaced with an upgraded pre-bled hydraulic system (part number **PS0523-2**). This system offers an additional .125" of hydraulic rod travel.

For more details, please contact our technical service department at 800.528.6743.